

# Greenacre Lodge to Botesdale & Rickinghall

Difficulty: Easy | Distance: Approx. 4 miles | Time: 2 hours

-  Road/paved path
-  Field/grass footpath
-  Greenacre Lodge

A pleasant walk from the lodge to our nearest village, with two excellent dog-friendly pubs, serving local drinks and great food. There's also a well-stocked Co-op, Fish & Chip shop and Chinese takeaway. This walk can be completed as a circular, or returning via the same route. Mostly flat, with one steeper section, on a combination of road/paved path and field/grass footpath.





## Leaving the village

Carry on down the road, and soon you'll come to the edge of the village. The road veers round to the left, hugging the farm's walled garden (1).

Continue down the road and you'll see a private airfield at the bottom of the hill (2).





## Finding the footpath

At the bottom of the hill, cross the small bridge and continue down the tree-lined road with the private airfield on your right.

Continue walking past the Hinderclay Lakes gate (1) on your left, a popular, high-quality day ticket coarse fishery. It features six distinct lakes known for specimen carp (up to 30lb+), tench, bream, and silverfish. The venue is aimed at anglers of various skill levels and day tickets are available from the bailiff on the bank, or from the on-site office.

Carrying on down the road, it will soon become steeper. Walk until you see a Footpath sign on your left (2). Take the footpath into the field.

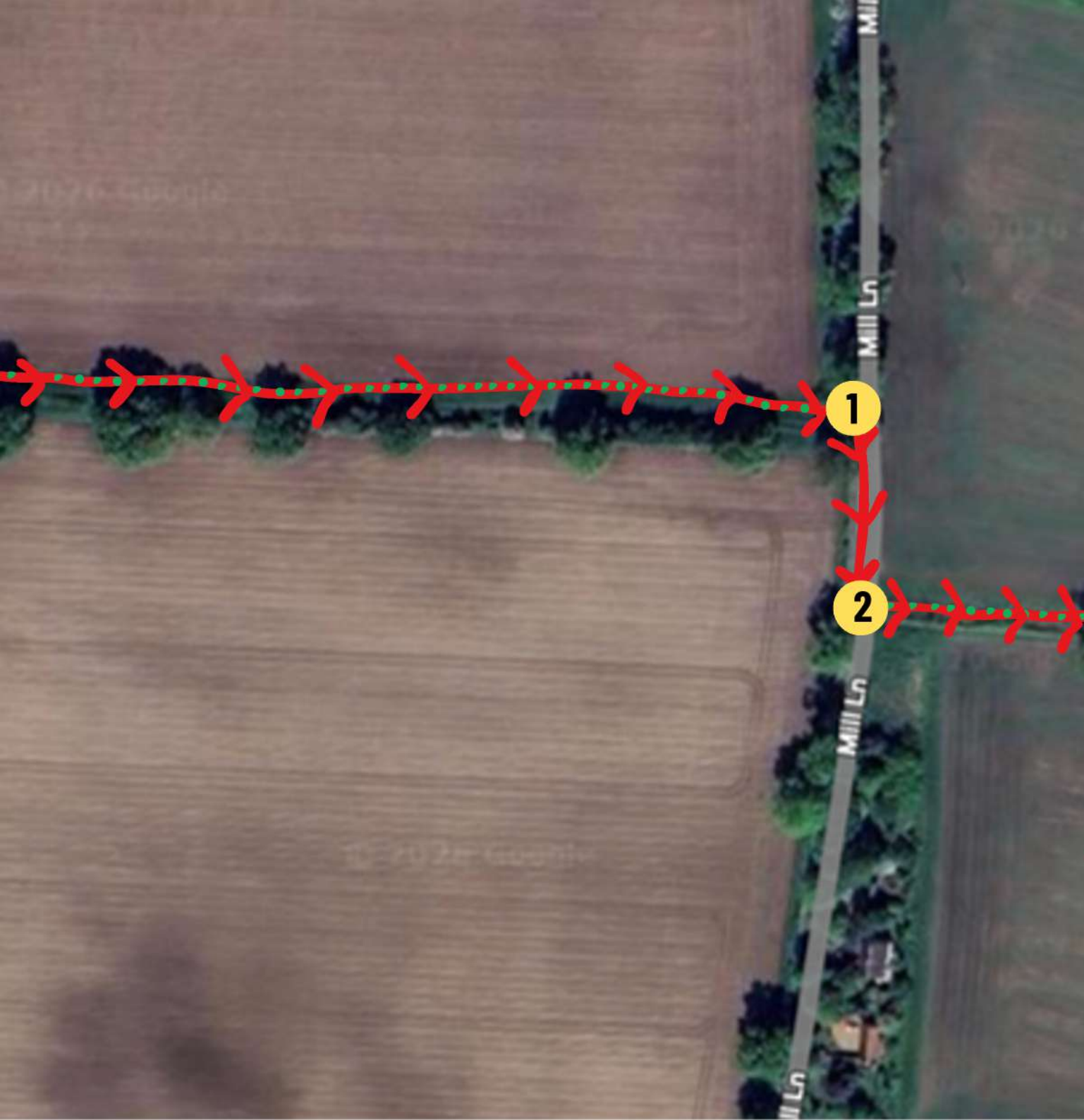


## Across the fields

Walk down the footpath until you reach a tree-lined section. Continue straight, walking on the left hand side of the trees to continue on the path.

Walk to the end until you come to a road (1 - Mill Lane) and turn right down the road.

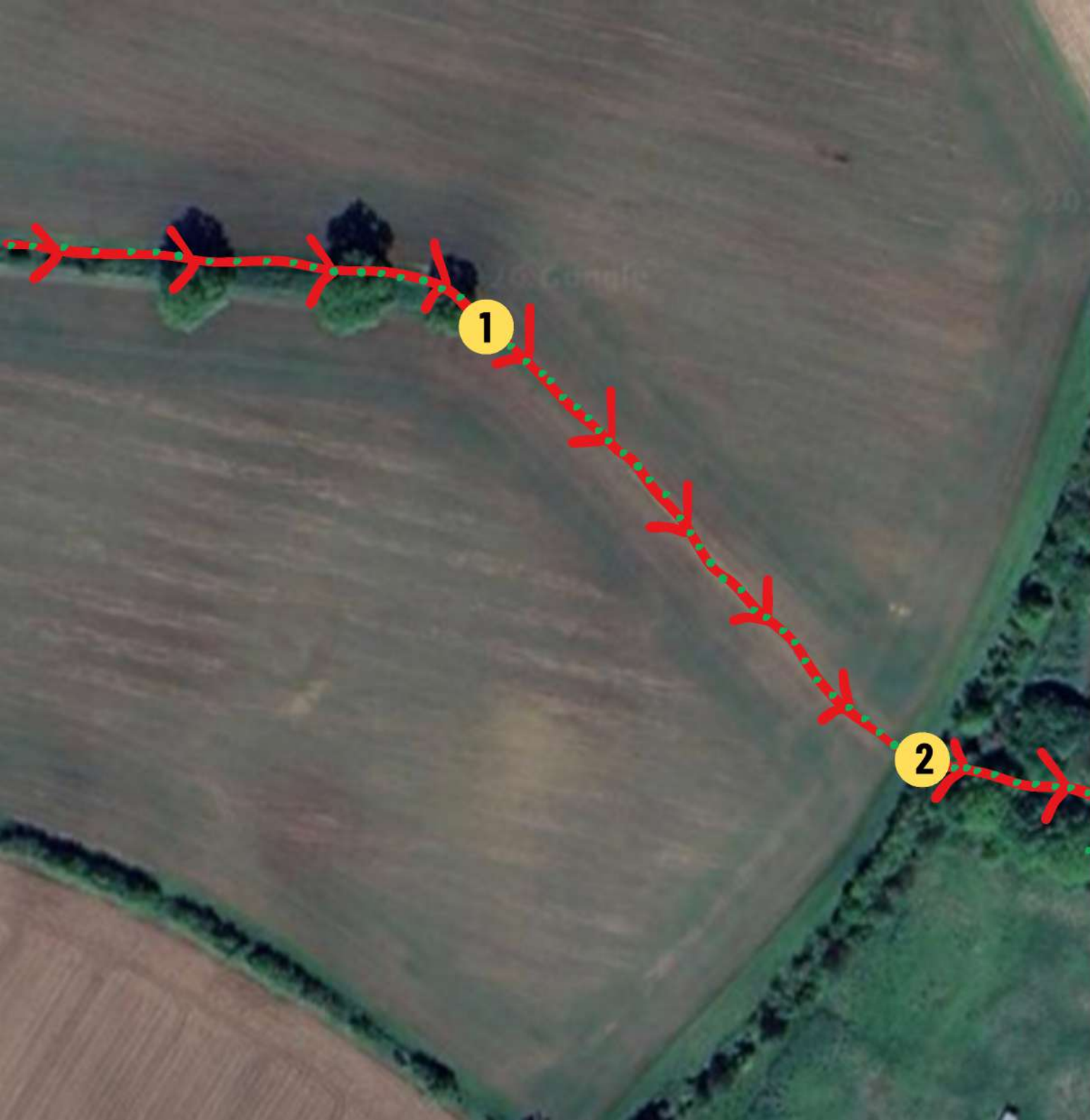
Almost immediately, there is another footpath on the left (2). Take the footpath and continue walking through the field.



# Through the gate

Follow the path and walk through the field, veering slightly right at the end of the trees, as the path slopes downward, toward a gate at the bottom.

On reaching the tree line, go through the gate and continue straight down the path with the open field on your right.

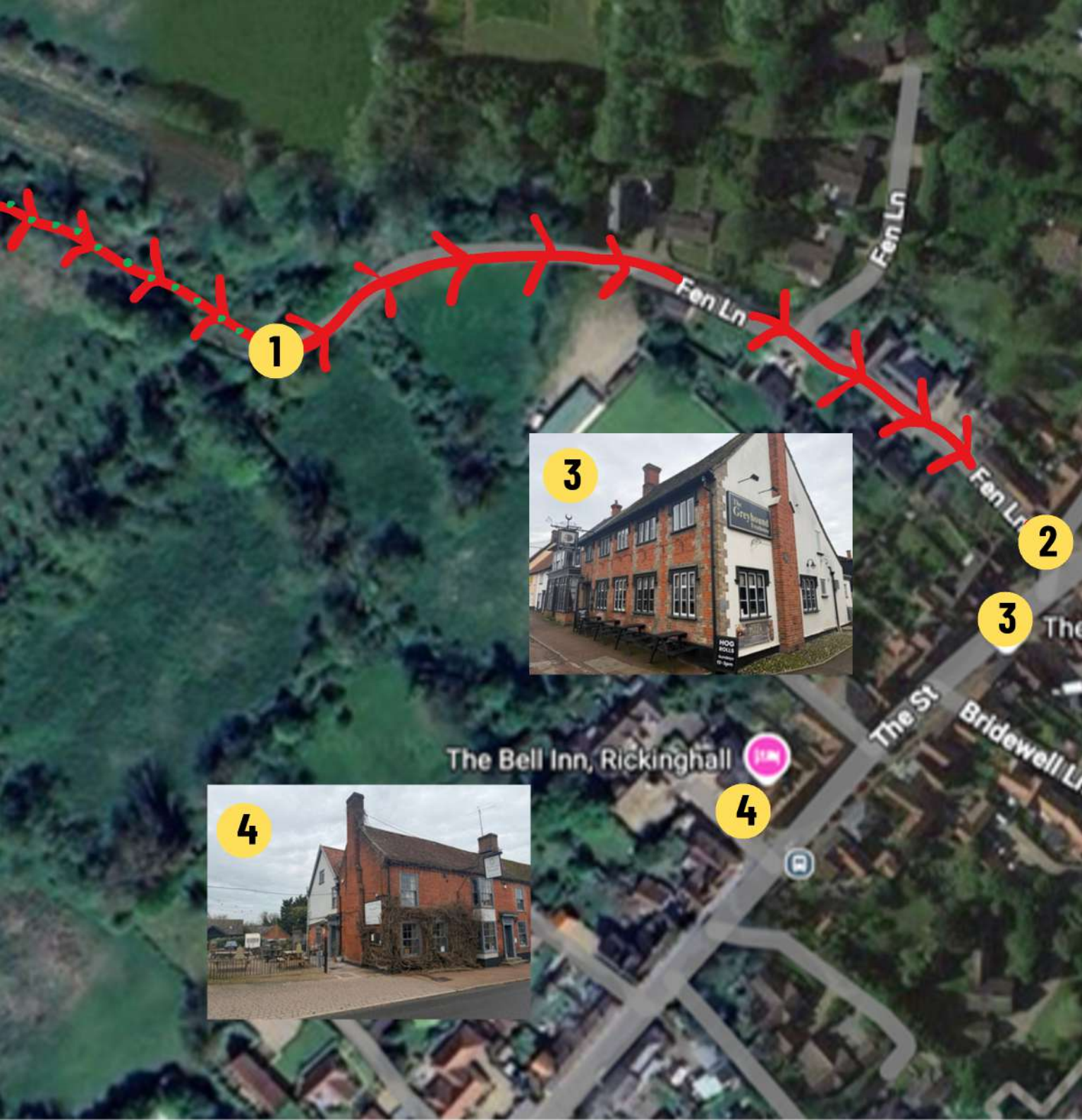


# Entering Botesdale

At the end of the path you will come to a small bridge over a brook (1), in a picturesque setting. In Spring the banks of the brook are full of snowdrops, daffodils and crocuses.

Cross the bridge and follow the path round to the left, continuing until you come to the end of the meadow. The path will turn into a road called Fen Lane, lined with lots of lovely character properties, a bowls club and Botesdale Methodist Church on the right.

Follow along Fen Lane to the end, which leads to The Street, Botesdale's main road (2). In front of you will be The Greyhound (3), a lovely old pub that serves wood-fired pizza and hog rolls. If you turn right there is another great pub in view at the top of the hill, The Bell Inn (4). This pub is a gorgeous cosy spot, serving delicious British food (awarded the AA rosette). Both pubs are dog-friendly.

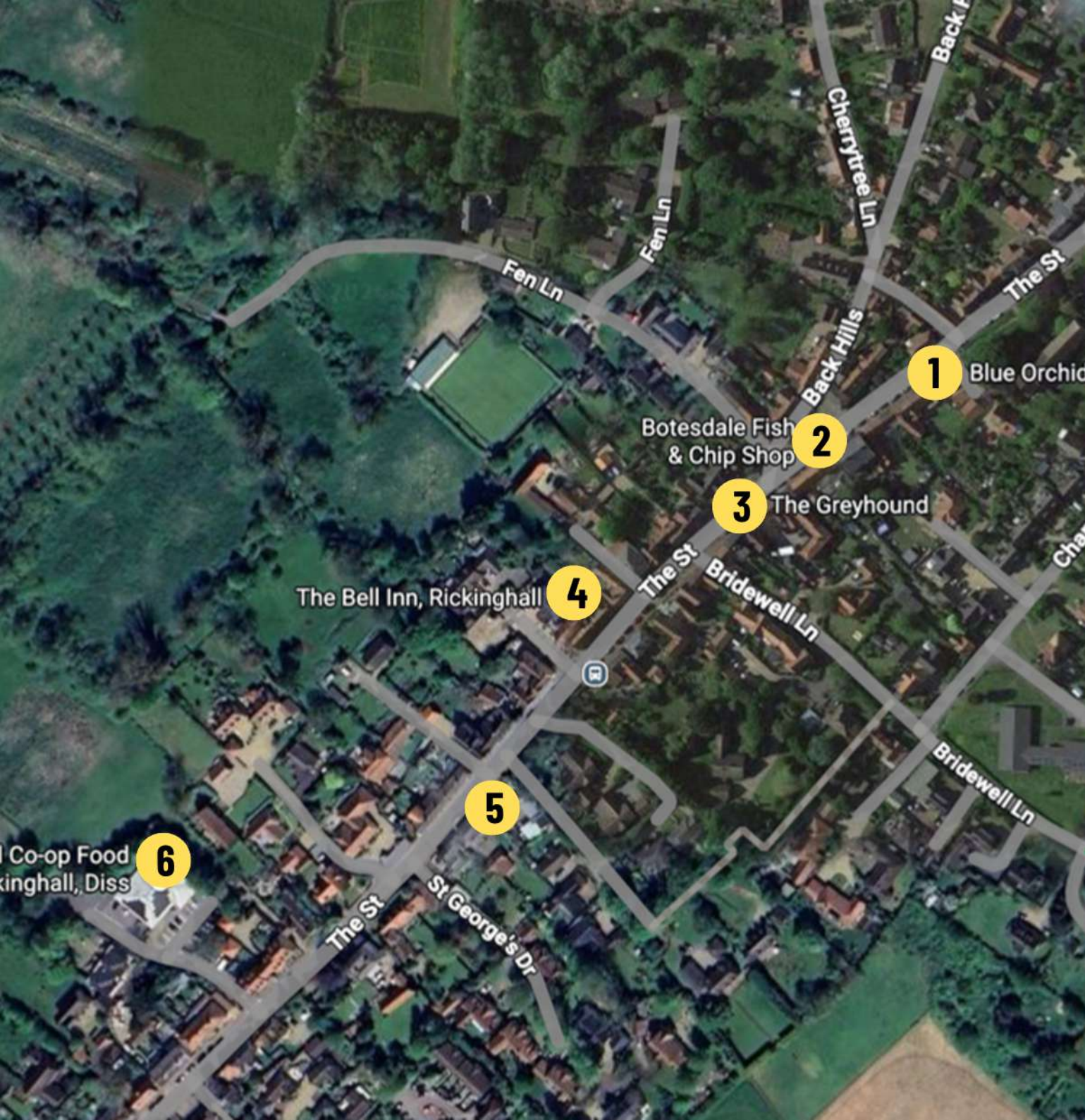


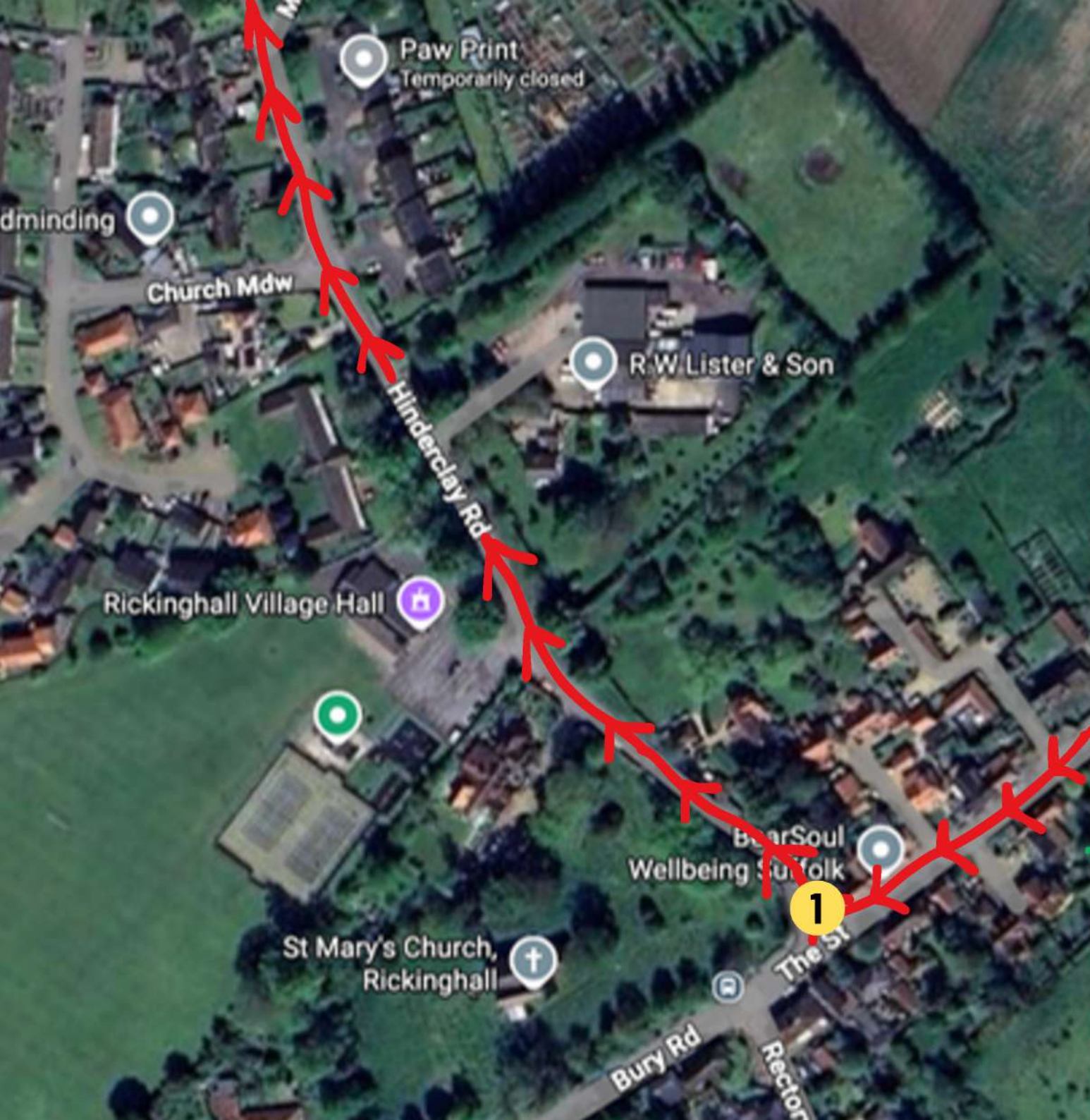
# Botesdale & Rickinghall

Originally two hamlets, Botesdale & Rickinghall have merged over time into one village with a central street running through it. The village sign is opposite The Greyhound, indicating the border between the two.

There are a number of beautiful period properties in the village, with some of the oldest dating back to the 15<sup>th</sup> Century. There are also some great independent businesses available for visitors to enjoy:

- 1** Blue Orchid Chinese Takeaway
- 2** Botesdale Fish & Chip Shop
- 3** The Greyhound
- 4** The Bell Inn
- 5** Faith's Gift Shop
- 6** Co-op Supermarket





## Heading back

To get back to Greenacre Lodge, you have two options. You could simply retrace your steps, going back the way you came, or if you wish to carry on through Rickingham, walk down The Street for half a mile until you reach St. Mary's Church.

Turn right just before the church's walled graveyard (1), onto Hinderclay Road, and follow the road all the way back to Hinderclay (about 2 miles).

This route is fully road-based, so a good option if raining. While the road generally isn't busy, there isn't a pavement on the majority of the route, so please take care and watch out for vehicles.

We hope you have an enjoyable walk in the Suffolk countryside.

